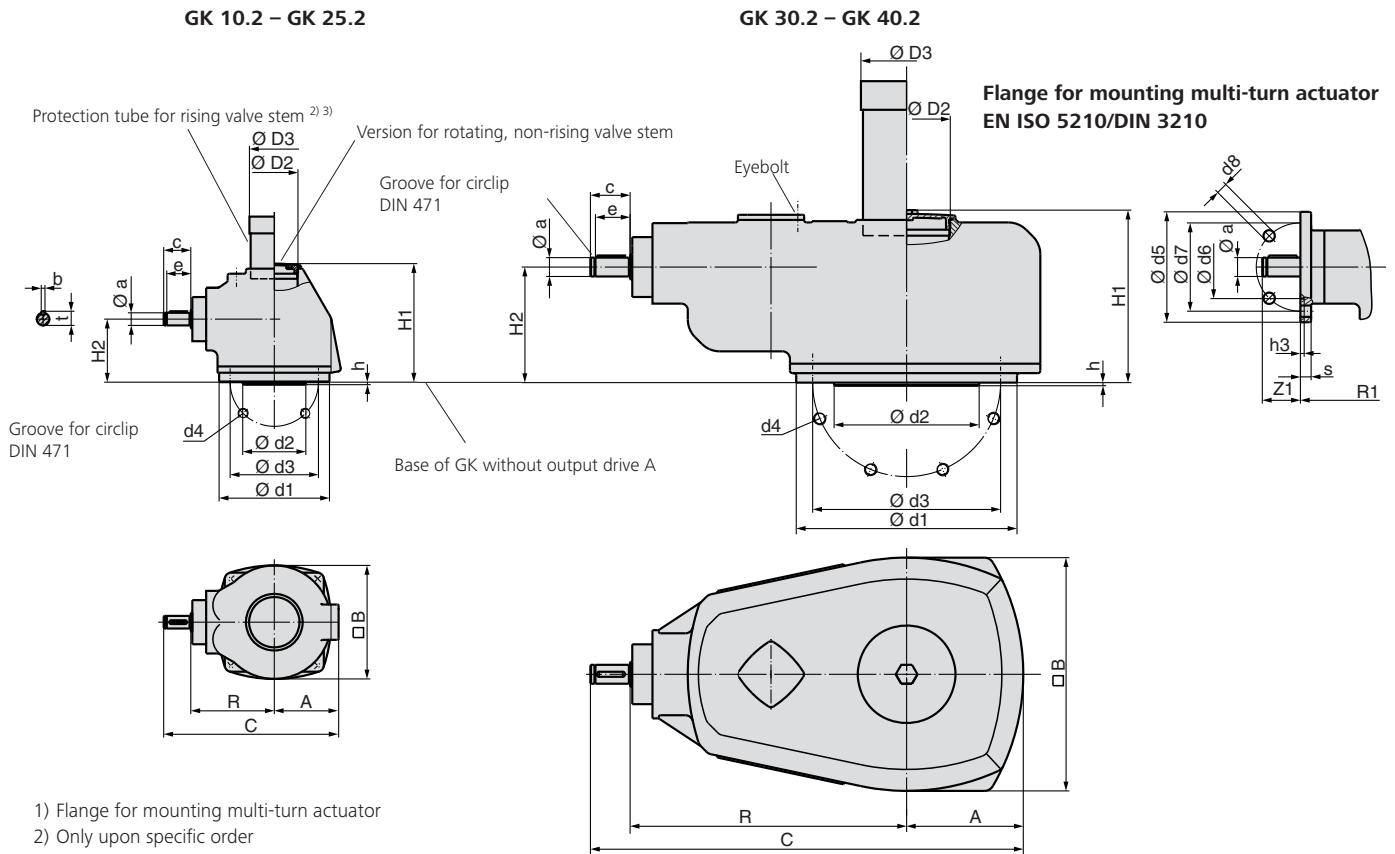


Dimensions Bevel gearboxes



- 1) Flange for mounting multi-turn actuator
- 2) Only upon specific order
- 3) In steps of 100 mm length each
- 4) Without spigot
- 5) Does not apply to special reduction ratio 1:1 (U3.1618)

Output drives according to EN ISO 5210, DIN 3210, DIN 3338, Dimensions see overleaf

Dimensions	GK 10.2	GK 14.2	GK 14.6	GK 16.2 <sup>5)</sup>	GK 25.2	GK 30.2	GK 35.2	GK 40.2
EN ISO 5210/DIN 3210	F10 (G0)	F14 (G1/2)	F14 (G1/2)	F16 (G3)	F25 (G4)	F30 (G5)	F35 (G6)	F40 (G7 <sup>4)</sup> )
A	74	99	99	130	185	185	225	250
□ B	130	180	180	230	340	370	450	500
C	225	274/294	274/294	359	486	686/706	792	870
Ø D2	G 2 "	G 2 ½ "	G 2 ½ "	G 3 "	G 4 "	G 5 "	M190 x 3	M220 x 3
Ø D3	60 x 3.7	76 x 3.7	76 x 3.7	89 x 4.1	114 x 4.5	139.7 x 4.85	193.7 x 6.3	219.1 x 6.3
H1	170	188	188	202	234	273	334	349
H2	77	100	100	113	128	183	231	247
R	108	133/135	133/135	169	241	438/448	492	546
R1	110	135	135	169	241	441	486	540
Z1	40	40/60	40/60	60	60	60/80	80	80
Ø a	20	20/30	20/30	30	30	30/40	40	40
b	6	6/8	6/8	8	8	8/12	12	12
c	42	42/60	42/60	60	60	63/73	73	73
Ø d1	125	175	175	210	300	350	415	475
Ø d2	70(60)	100	100	130	200 (160)	230 (180)	260 (220)	300 <sup>4)</sup>
Ø d3	102	140	140	165	254	298 (300)	356	406
d4	4 x M10	4 x M16	4 x M16	4 x M20	8 x M16	8 x M20	8 x M30	8 x M36
e	38	38/55	38/55	55	55	55/65	65	65
h	3	4	4	5	5	5	5	5 <sup>4)</sup>
t	22.5	22.5/33	22.5/33	33	33	33/43	43	43
EN ISO 5210 <sup>1)</sup>	F10/F14	F10/F14	F10/F14	F14	F14/F16	F14/F16	F14/F16/F25	F16/F25
DIN 3210 <sup>1)</sup>	G0/G1/2	G0/G1/2	G0/G1/2	G1/2	G1/2/G3	G1/2/G3	G1/2/G3/G4	G3/G4

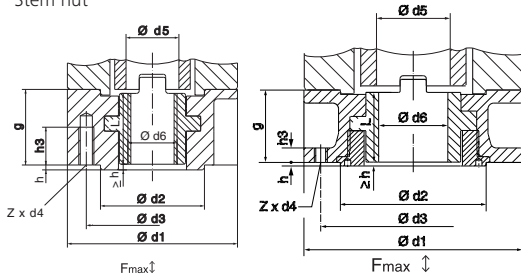
Flange for mounting multi-turn actuator

EN ISO 5210	F10		F14	F16	F25	
DIN 3210		G0	G1/2	G3		G4
Ø d5	125	125	175	210	300	300
Ø d6	70	60	100	130	200	160
Ø d7	102	102	140	165	254	254
Ø d8	11	11	18	22	18	18
h3	5	5	5	6	6	6
s	12	12	17	25	28	25

We reserve the right to alter data according to improvements made. Previous documents become invalid with the issue of this document.

Dimensions Valve attachments according to EN ISO 5210, DIN 3210

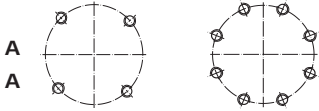
Stem nut



Dimensions		GK 10.2	GK 14.2/GK 14.6	GK 16.2	GK 25.2	GK 30.2	GK 35.2	GK 40.2
EN ISO 5210	DIN 3210	F10 G0	F14 G1/2	F16 G3	F25 G4	F30 G5	F35 G6	F40 G7
F max. kN		70	160	250	380	460	875	1375
Ø d1		125	175	210	300	350	415	475
Ø d2		70 60	100	130	200 160	230 180	260	300
Ø d3		102	140	165	254	298 300	356	406
d4		M10	M16	M20	M16	M20	M30	M36
Ø d5		42	60	80	100	120	160	180
Ø d6 max.		40	57	75	95	115	155	175
g		50	65	80	130	160	185	225
h		3	4	5	5	5	5	8
h3		15	25	35	20	25	38	45
L		47	60	75	126	156	175	210
Z		4	4	4	8	8	8	8
Weight kg		2.8	6.8	11.7	42	69	125	200

Type  
EN ISO 5210  
DIN 3210

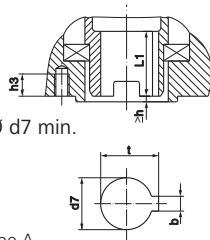
GK 10.2 – GK 16.2    GK 25.2 – GK 40.2



Arrangement of bores d4

Output drive plug sleeve <sup>3)</sup>

Type  
EN ISO 5210    **B 1** = Ø d7  
EN ISO 5210    **B 2** < Ø d7 > Ø d7 min.  
DIN 3210        **B** = Ø d7

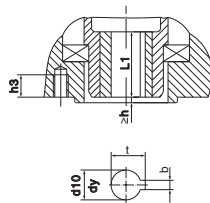


Dimensions		GK 10.2	GK 14.2/GK 14.6	GK 16.2	GK 25.2	GK 30.2	GK 35.2	GK 40.2
EN ISO 5210	DIN 3210	F10 G0	F14 G1/2	F16 G3	F25 G4	F30 G5	F35 G6	F40 G7
b JS 9 <sup>1)</sup>		12	18	22	28	32	40	45
d7 H9		42	60	80	100	120	160	180
Ø d7 min.		30	45	60	75	90	120	140
h3		15	25	30	28	30	50	60
L1		45	65	80	110	130	180	200
t <sup>1)</sup>		45.3	64.4	85.4	106.4	127.4	169.4	190.4

For missing dimensions, refer to type A

Bore with keyway

Type  
EN ISO 5210    **B 3** = Ø d10  
EN ISO 5210    **B 4** ≤ Ø dy  
DIN 3210        **E** = Ø d10

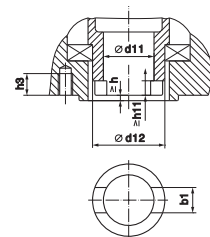


Dimensions		GK 10.2	GK 14.2/GK 14.6	GK 16.2	GK 25.2	GK 30.2	GK 35.2	GK 40.2
EN ISO 5210	DIN 3210	F10 G0	F14 G1/2	F16 G3	F25 G4	F30 G5	F35 G6	F40 G7
b JS 9 <sup>1)</sup>		6	8	12	14	18	22	28
Ø d10 H9		20	30	40	50	60	80	100
Ø dy max.		30	45	60	75	90	120	140
h3		15	25	30	28	30	50	60
L1		45	65	80	110	130	180	200
t <sup>1)</sup>		22.8	33.3	43.3	53.8	64.4	85.4	106.4
Gewicht kg		0.4	1.1	2.4	5.1	8.6	21.2	27.5

For missing dimensions, refer to type A

Dog coupling <sup>3)</sup>

Type  
DIN 3338    **C** = Ø d11

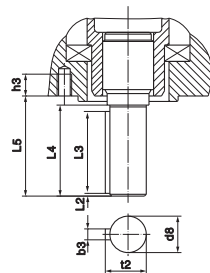


Dimensions		GK 10.2	GK 14.2/GK 14.6	GK 16.2	GK 25.2	GK 30.2	GK 35.2	GK 40.2
EN ISO 5210	DIN 3210	F10 G0	F14 G1/2	F16 G3	F25 G4	F30 G5	F35 G6	F40 G7
b1 H11		14	20	24	30	40	45	50
Ø d11 H11		28	38	47	64	75	105	125
Ø d11 min.		20	30	40	50	60	80	100
Ø d11 max. <sup>2)</sup>		42	60	80	100	120	160	180
Ø d12		55	80	100	130	160	200	230
h3		15	25	30	28	30	50	60
h11		7	8	10	11	13	17	20

For missing dimensions, refer to type A

Shaft end

Type  
DIN 3210    **D**



Dimensions		GK 10.2	GK 14.2/GK 14.6	GK 16.2	GK 25.2	GK 30.2	GK 35.2	GK 40.2
EN ISO 5210	DIN 3210	F10 G0	F14 G1/2	F16 G3	F25 G4	F30 G5	F35 G6	F40 G7
Ø d8 g6		20	30	40	50	60	80	100
b3 h9		6	8	12	14	18	22	28
h3		15	25	30	28	30	50	60
L2		1.5	2	3	3	3	3	3
L3		45	63	80	100	110	110	140
L4		50	70	90	110	120	120	150
L5		55	76	97	117	126	125	162
t2		22.5	33	43	53.5	64	85	106
Weight kg		0.7	2	4.3	9	15	34	50

For missing dimensions, refer to type A

1) Dimensions depend on Ø d7/ Ø d10, refer to DIN 6885-1

2) For rising valve stem Ø d11 max. = Ø d5 of type A

3) Weight included in actuator

We reserve the right to alter data according to improvements made. Previous documents become invalid with the issue of this document.